

WORD SORT (S-, SL-, & ST-)

Directions: place the picture under the right starting sound.

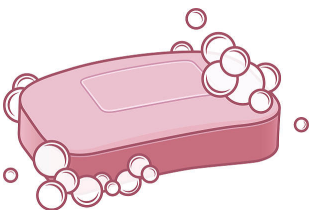
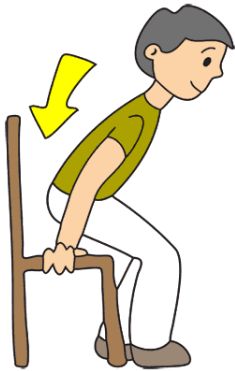
S-	SL-	ST-

WORD SORT (S-, SL-, & ST-)

Directions: place the picture under the right starting sound.

S-	SL-	ST-

S-



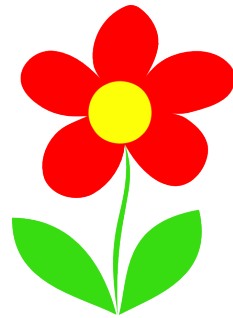
SL-

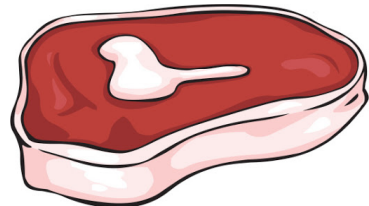
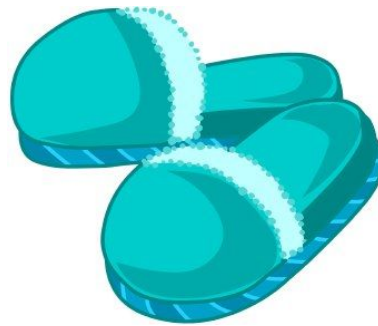
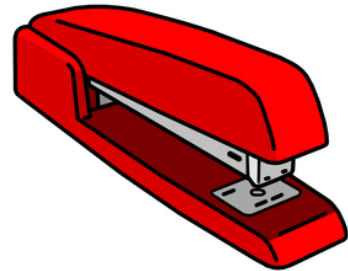


z z z



ST-





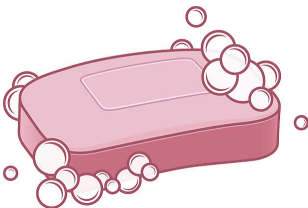
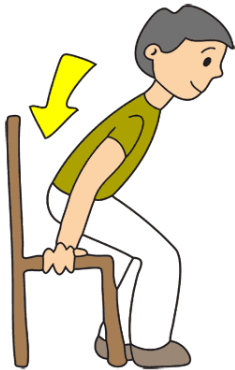
S-	SL-	ST-
Six	Slide	Stop
Sit	Slug	Stairs
Sad	Sled	Star
Sun	Sleep	Stem
Soap	Slip	Stamp
Sick	Slot	Stage
Sew	Slice	Storm
Sip	Slope	Stapler
Silly	Slipper	Steak
Sock	Sleeve	Stump

DIRECTIONS:

Cut & Scramble the pictures

Then have student glue them into the correct column.

S-



SL-



ST-

